

TK-CONN SPECIAL

Aseptic Tank connection, with bolted locking ring

For flush-mounted equipment on tank top or side. To connect clamp connectable equipment to the tanks
For tangential or horizontal attachment.

Quick equipment changeover

Flush-welded to tank, no dead legs or leakage

Fig.1 TK- CONNECTION

Available in size from 3/4" up to 4", DN10 up to DN100
in four different thickness : std, 25 mm, 38 mm, 51 mm
According to ASTM A269 /270, ISO 1127or DIN 11851
Material 1.4404 – 1.4435 - Hastelloy C22 – C276 on request
Designed for use of standard clamp gaskets
According to PED 97/23/CE directive and ASME VIII Div.2

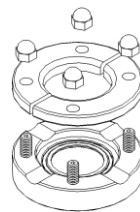


Fig.2 TK- CONN BLOCK HOUSING

For special applications onto tank welding
According to ASTM A269 /270, ISO 1127or DIN 11851
Material 1.4404 – 1.4435 - Hastelloy C22 – C276 on request
Non-standard product, custom thicknesses, avoids warping

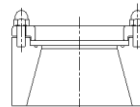


Fig.3 TK- CONN ANGLED HOUSING

Angle profile cutted TK-Connections customized
For tank welding where orthogonal connections required
Special execution High / angle as to be agree
Material 1.4404 – 1.4435 - Hastelloy C22 – C276 on request

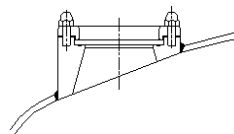


Fig.4 TK- CAP

Standard TK-Connections in various size machined directly
in a special 8 -10 or 12" clamp tank cover cap for pharma
and biotechnology applications, custom made on request
Std. material 1.4404, 1.4435 on request

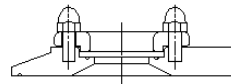
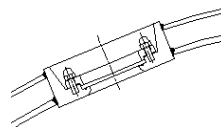


Fig.5 TK- CONN JACKET HOUSING

TK-Connections with special profile dedicated
for pharmaceutical reactors with cool / heat jacket
or thermal insulation cladding.



For non-standard TKC CONNECTIONS options please contact: info@aerreinox.it

TK-INLINE SPECIAL

Aseptic TK IN-LINE connection

IN-LINE version, can connect a wide range of clamped equipment or equipped with a blind cap without affecting the aseptic quality of the system. Quick equipment changeover very fast and easy to adjust your process.

The body are machined from bar and the pipes in line are TIG welded, manually polished or electro-polished according to customer specifications.

Fig.6 TK IN-LINE HOUSING

Available with clamped or butt weld ends for pipe standard
According to ASTM A269 /270, ISO 1127or DIN 11851
Material 1.4404 – 1.4435
Special extended tube for orbital welding on request

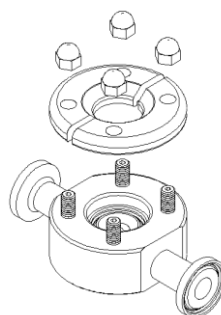


Fig.7 TK IN-LINE ANGLE HOUSING

Available with clamped or butt weld ends for pipe standard
According to ASTM A269 /270, ISO 1127or DIN 11851
Material 1.4404 – 1.4435

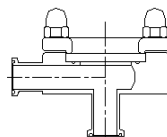


Fig.8 TK IN-LINE THREE WAY HOUSING

Available with clamped or butt weld ends for pipe standard
According to ASTM A269 /270, ISO 1127or DIN 11851
Material 1.4404 – 1.4435

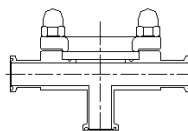
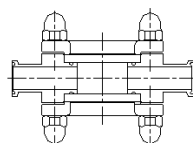


Fig.9 TK IN-LINE DOUBLEX HOUSING

Angle profile cutted TK-Connections customized
For tank welding where orthogonal connections are required



For non-standard TKC CONNECTIONS options please contact: info@aerreinox.it

Get the information you need and more at : info@aerreinox.it

In the interests of development and improvement of the product, we reserve the right to change the specifications without prior notice.